
North Carolina

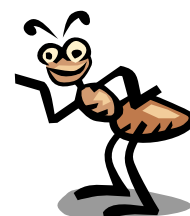
Bee Buzz

Official Newsletter of the North Carolina State Beekeepers Association

Vol. 26, No. 2



Summer Conference Set For Charlotte, July 8, 9, 10



Top Experts To Appear

Some of the North America's top honey bee experts will present their latest research at the Summer Conference of the NC State Beekeepers Association in Charlotte, July 8-10.

"This has the potential for being one of our best Summer Meetings," said NCSBA President, J. D. Foust. "We have an excellent program that will be of great interest to our serious beekeepers. The accommodations are outstanding and affordable. I'm confident this will be a conference that will be talked about for some time."

Among the featured speakers are Dr. Mark L. Winston, Professor of Biological Sciences at Simon Fraser University in British Columbia, Canada. He has done research and written extensively on bee biology.

Equally renowned is Dr. Dianna Samataro, Research Entomologist with the US Department of Agriculture at the Carl Hayden Honey Bee Research Lab in Tuscan, Arizona. She will give an update on current research at the

Tucson lab and address other matters of interest to beekeepers.

Charlie Harper will talk about the Russian Queen project. He is the prime contractor for supplying Russian Queens that have been raised through the Baton Rouge, Louisiana Lab.

In addition, presentations are scheduled by Florida Bee Inspector, David Westervelt and Jennifer Berry, Apicultural Research Coordinator and Apiary Manager at the University of Georgia. And, of course, our own North Carolina apiary experts led by Dr. David Tarpy will round out the agenda.

Mark your calendar.

Good Bee Year Forecast

North Carolina beekeepers are looking for a good year for apiary activities this year after several years of challenging conditions, including drought and pest problems.

"We're seeing the makings of a very good year," said Don Hopkins, Chief Bee Inspector for the NC Department of Agriculture. "The bees that survived the winter are coming along quite well and early indications are for a very good honey flow," Hopkins said.

Bee producers responded to an early shortage of bees needed for pollination of the blueberry crop and there appeared to be an adequate supply of bees at early summer.

Inside This Issue

President's Page	3, 4
Meet New Experts	5
Honey Competition	6, 7
Summer Conference	9-11
Telling The Bees	12

From the President

NC State Beekeepers Association

Spring Meeting - The annual Spring Meeting was held, March 12 & 13, on the campus of Craven County Community college in New Bern. Registration began at noon on Friday and the first general session began at one o'clock with Dr. David Tarpy providing an overview of the Apiary Program at NCSU. The second general session was led by Dr. Tom Glasgow of the NC Department of Agriculture and Consumer Services Pesticide Division. His topic was "Proper Use and Management of Pesticide". Those attending the session were allowed to sign-up for credit toward a "Pesticide User License". The remainder of Friday afternoon was divided into workshop sessions and tests for the Master Beekeeper Program and Pesticide User License. Dr. Marla Spivak was the featured speaker of the evening. She gave an interesting report on hygienic bees and the queen breeding program she runs at the University of Minnesota

Saturday morning was filled with general sessions starting with a session led by Nabor Mendizabal, a graduate student from The University of Georgia explaining UGA's honey bee breeding program, followed by an "Open Dialogue with the NCSBA President" and a Report on the Apiary Inspection Program by Dr. Kathy Kidd.. Following the morning break, Dr. Tarpy reported on the "Golden Leaf Grant Program" and Dr. Spivak spoke again on the University of Minnesota Queen Research Program.

Two Hundred thirty seven persons registered and attended the meeting. Thanks to the Craven-Pamlico Beekeepers for all the work they did in organizing and running the meeting. A vote of thanks is also due to Craven Community College for making their fine facilities available for the meeting.

J. D. Foust

Fund Raising Campaign for Zoo Exhibit -

The Executive Committee authorized the Zoo committee to move forward with a campaign to raise funds to finance a permanent honey bee exhibit at the North Carolina State Zoo. The Honey Bee Exhibit is scheduled to be in the redesigned Touch and Learn Center at the Zoo. The Zoo is currently developing program criteria for the Touch and Learn Center to include the Honey Bee Exhibit. The new Touch and Learn Center is scheduled to open in 2007. The NCSBA Zoo Committee has been advised to move forward with a fund raising campaign for the Honey Bee Exhibit. The cost has been estimated to be \$160,000 but that is subject to change when plans for the facility are finalized. We don't know exactly what the exhibit will be but we do know the Zoo can't allow anything that isn't first class so it will surely be an excellent exhibit. Chairman Irvin Rackley and the Zoo Committee have worked diligently to develop a campaign for raising the needed funds. You should be hearing from them shortly. ***It is now up to us, the beekeepers of North Carolina to show just how much interest we have in a permanent Honey Bee Exhibit at the North Carolina State Zoo. If we really want the Honey Bee Exhibit to become a reality, we must be generous in our financial support.*** The Zoo Committee's plan is to complete the fund raising campaign during 2004. If the Zoo Committee is successful in

raising a substantial amount of money for the honey bee display, the Zoological Society will try to get additional funds from friends of the Zoo who may have interest in the exhibit.

New Chapter - A new beekeepers association has been organized in Cleveland County. They currently have 19 NCSBA members and are expecting about 15 more to join. We understand a copy of their Constitution and By Laws and an Application for Becoming an NCSBA Chapter are on the way for NCSBA approval.

Local Chapter email list—The NCSBA Local Chapter email communication list was activated on January 29, 2004. The list includes most local chapter presidents or someone designated by the president to receive and send information for their chapter. If you are a chapter president and are not receiving information on the email list, please contact me <jdfo@bellsouth.net> and I will get you on the list immediately. The list includes key NCSBA Officers and Regional Representatives; Dr. David Tarry, Extension Apiculturist at NCSU; and Don Hopkins, Chief State Bee Inspector. Immediately after the list was activated we received a request that Cooperative Extension Agents working with beekeeping programs be admitted to the line. To date ten CES agents have joined us on the line. We welcome them! They are very important to beekeeping and we urge them to become active in all we do.

The email line enables us to quickly and easily send and receive information from the chapters. It also gives chapters opportunity to share news about scheduled activities with chapters across the state. We like to hear about their successes and hope they will use the line to inform us of things that have gone well.

Obituaries - We are always saddened to hear of the death of a fellow beekeeper or his/her spouse. This year there seems to be more than

usual and we are never sure that we haven't missed someone. Sometime we hear of a death but have a very difficult time getting an obituary or any details on a timely basis, if at all. The NCSBA Recording Secretary sends a sympathy card to the family if she knows about the death. I like to attend the funeral if it's possible, and we want to give proper notice in the Bee Buzz and Yellow Book. Please provide us copies of NCSBA member deaths in your area so that we may take appropriate action.

Honey Bee License Plate - In the most recent issue of the Bee Buzz, I advised you that the Executive Committee had asked that I put a coupon in the Buzz asking those interested purchasing a North Carolina Honey Bee License Plate to so indicate. Establishment of such a plate would require special legislation and we would need to assure the General Assembly that, at least 300 plates would be purchased. NCSBA would have to bear the expense of designing the special plate and individuals would pay an additional \$30 over the regular cost of their license plate making the total annual license plate cost \$55. I have a special license plate and that is what I have to pay. Only 22 persons returned the coupon from the last issue. We are doing the coupon again in this issue. If you are interested in purchasing a Honey Bee License Plate, be sure to complete and return the coupon. If we don't get a total of at least 300 indicating interest in purchasing the special plate, the idea will be dropped for now.

If they are made available, I would be interested in purchasing a special NC Beekeepers license plate.

Name _____

Address _____

City _____ State _____

Mail to NCSBA, P. O. Box 33803,
Raleigh, NC 27636-3803

Meet Your New Bee Experts

By Dr. David Tarpy
State Apiculturist

The Apiculture program at NCSU has seen some significant changes lately. There have been some exciting new changes in the landscape of honey bee research across the *entire* state of North Carolina. Specifically, I am referring to several recent faculty hires at various universities within the last few years. These new additions to North Carolina's higher education have quickly established a core group of excellent honey bee biologists spanning the entire spectrum of research and are sure to benefit Tarheel beekeepers.

The newest addition is Dr. Christina Grozinger at the Entomology Department at NCSU, filling a position reserved for an insect genomicist ('genomics' is one of those "hot" new areas of genetic research that investigates genes, their DNA sequences, and their function). Her research organism just so happens to be the honey bee. She has done work on the molecular basis of behavior and how they are regulated by pheromones. A graduate of Harvard University, she has been a postdoctoral researcher in Dr. Gene Robinson's lab at the University of Illinois, Champaign-Urbana for the last three years. We are extremely fortunate to have her join the faculty at NC State in September, especially since she was simultaneously offered a position at Cornell University.

Dr. Susan E. Fahrbach was expected to arrive at Wake Forest University in June. A tenured full professor at the University of Illinois, Champaign-Urbana and long-time collaborator with fellow faculty member Dr. Robinson, she was attracted to WFU to become the Reynolds Professor of Developmental Neuroscience. Her work has uncovered many issues concerning the hormonal regulation and function of the insect nervous system. In particular, she has studied the behavioral maturation of honey bees at the neurophysiological level, focusing on the learning centers of the brain called the 'mushroom bodies'. Well respected in her field, she is an excellent scientist who will make valuable contributions to honey bee biology.

The third recent hire is Dr. Olav Ruppell. He joined the faculty of UNC-Greensboro last summer in the Biology department. He received his Ph.D. from University of Würzburg in Germany working on the

body size of queen ants. Being a true social insect biologist, he began studying honey bees while a post-doctoral researcher at the University of California, Davis in Dr. Robert Page's lab working on honey bee behavioral development and aging using various field and laboratory techniques. While he will continue to study ants (specifically their reproductive tactics and ecology in NC), he will also be studying the aging and mortality patterns in honey bees and their associated relationships with worker and colony performance.

The final honey bee scientist, Dr. Stanley Schneider, has been a faculty member at UNC-Charlotte for many years. He is a traditional honey bee behavioral ecologist, investigating how bees behave and interact with each other and their environment. His two main research areas have been on how bees communicate through dancing (both the 'waggle' dance and the 'vibration' dance) and on the biology and behavior of the African honey bee (both in Africa and in the southeastern US). Much of Dr. Schneider's recent work has been in collaboration with the USDA Carl Hayden Honey Bee Research Center in Tucson, AZ, and he provided a very nice summary of their work at last year's NCSBA summer meeting in Elkin.

A common thread that ties all of these programs together is honey bee behavior. This is not all that surprising, given that the honey bee has been a model study organism in behavioral biology ever since Karl von Frisch deciphered the dance language. Despite this commonality, however, each program approaches bee behavior from different levels, ranging from molecular genetics and genomics (Grozinger), to neuroanatomy and physiology (Fahrbach), to development and behavior (Ruppell), to social behavior and ecology (Schneider), and finally to applied apiculture (NCSU), with significant overlap between them. Such a diversity of approaches to a common, fundamental issue in biology has tremendous potential for collaborating in research projects, securing funding, and training students.

Emerging from these recent developments is a 'North Carolina Honey Bee Research Consortium' that addresses honey bee biology at all levels. Since all practical applications of apiculture are based on the fundamental underpinnings of their biology, such a network has tremendous potential to address various important questions in the world of honey bees.

HONEY COMPETITION

These rules and regulations will govern the honey competition during the annual Summer Meeting of the North Carolina State Beekeepers Association.



1. Entries will be received on Friday of the meeting beginning at 9 a.m. and closing promptly at 10 a.m.
2. Each person entering items in the "honey competition" will be assigned a number to be placed at the proper place on the entry tag and on the entry form.
3. It will be the responsibility of the exhibitor to see that entries are correctly classified and tagged.
4. Official printed forms must be used in making application for entry.
 - be sure to fill in the form completely, accurately, and legibly
 - be sure to place entry number on the entry form and on the entry tags.
 - be sure there are no labels, names or anything on the entries that would identify the exhibitor.
 - all honey or beeswax entered should have been produced by the exhibitor during the past 12 months
 - containers of cellophane, glass, or transparent material of some other suitable type are recommended
 - all entries must be of required color, quality and condition
 - no ribbon will be given to any one entry through the lack of competition if the entry is of inferior quality
 - there is a limit of one entry per person for each listed category.

Class	Entry
SM-1	One deep comb for extracting
SM-2	One shallow comb for chunk cutting (no wired comb or plastic)
SM-3	Three sections of comb honey, light

- | | |
|-------|---|
| SM-4 | Three sections of comb honey, dark |
| SM-5 | Three sections of cut comb honey in containers, light |
| SM-6 | Three sections of cut comb honey in containers, dark |
| SM-7 | Three jars (not less than 14 oz.) (chunk, comb honey, light |
| SM-8 | Three jars (not less than 14 oz.) chunk, comb honey, amber |
| SM-9 | Three jars (not less than 14 oz.) chunk, comb honey, dark |
| SM-10 | Three jars (not less than 14 oz.) extracted honey, light |
| SM-11 | Three jars (not less than 14 oz.) extracted honey, amber |
| SM-12 | Three jars (not less than 14 oz.) extracted honey, dark |
| SM-13 | Three jars (not less than 14 oz.) creamed honey (finely granulated) |

Displays

- | | |
|-------|---|
| SM-14 | Beeswax (not less than 15 lbs.) in size and shapes commonly on sale by the apiarist |
| SM-15 | Pure beeswax products - candies, carvings, models, novelties, - must be composed of pure beeswax only |
| SM-16 | One gift package of bee products suitable for sale to public |
| SM-17 | Two bottles(approximately 26 oz. Capacity each)non-carbonated dry mead |
| SM-18 | Two bottles(approximately 26 oz. Capacity each)of non-carbonated sweet mead |
| SM-19 | Two bottles(approximately 26 oz. capacity each)of mead with fruit |
| SM-20 | One black and white <u>or</u> color print of a honey bee or beekeeping related scene with appropriate caption (photograph must be mounted and no larger than (8"x10") |

FACTORS TO BE CONSIDERED IN JUDGING HONEY EXHIBITS

These factors are general guides for the use of judges and exhibitors. Honey with moisture of more than 18.6 per cent will be disqualified.

Classes SM-1,SM-2, SM-3, SM-4, COMB HONEY AND BULK HONEY FRAMES

Factors	Points
1. Uniformity of appearance	20
2. Absence of uncapped cells	15

- 3. Uniformity of color 15
- 4. Absence of watery cappings 15
- 5. Cleanliness 15
- 6. Freedom from granulation
and pollen..... 10
- 7. Appearance of cappings and
freedom from impurities.....10

Total 100

Similar criteria will be use in judging other categories. A complete list of the criteria will be available at the summer conference.

FOODS COOKED WITH HONEY

All entries in this class must contain honey as the principal sweeten ingredient. Entries must be prepared from ingredients compatible with commonly accepted recipes for the class in which they are entered. The purpose of this competition is to demonstrate skill in the use of honey in cooking. Because of their high sugar content, commercial mixes may not be used. There are no other ingredient restrictions. Factors such as whether the entry is representative of the entered class and freshness of the product will be considered in the judging. It will be the responsibility of the exhibitor to see that entries are correctly classified and tagged. Score cards will be provided for the judges to use as guides in judging foods cooked with honey.

Entries must be submitted on Friday morning between 9 a.m. and 10 a.m. on the form provided. Each person entering items in the contests will be assigned a number to be used on all of his/her entries. That number should be placed at the proper place on the entry tag and on the recipe card in the upper left corner. There must be no names or anything that would identify the exhibitor. A recipe, typed or hand written, on a 3" x 5" card (front only) must be submitted with each item entered (may be placed in a zip lock bag). If the recipe is not included with the item, the entry will be disqualified.



No entries accepted requiring refrigeration: (Examples: no uncooked eggs, pineapple, cream cheese, no meat, fish, poultry or vegetable entries accepted.).

ALL CAKES AND BREADS MUST BE ENTERED ON 6"X10" CARDBOARD OR PAPER PLATE, PLACED IN A CLEAR PLASTIC BAG WITH ENTRY TAG ATTACHED TO PLATE AND EXTENDING OUTSIDE BAG. NO ENTRIES ON GLASS OR CHINA WILL BE ACCEPTED. EXHIBITORS ARE REQUIRED TO BRING 1/2 CAKE, 1/2 LOAF BREAD, FOUR (4) ROLLS, SIX (6) COOKIES, EIGHT (8) PIECES OF CANDY, FOUR (4) MUFFINS, Entries become property of NCSBA and are served at the Saturday morning break. Exhibitors are encouraged to bring extra cookies, candy, etc. to serve at the Saturday morning break.

ENTRIES

- | Class | Entry |
|-------|---|
| SM-30 | Bread, loaves (yeast-white) |
| SM-31 | Bread, loaves (yeast-whole wheat) |
| SM-32 | Quick Fruit Bread (i.e. zucchini, banana, etc.) |
| SM-33 | Muffins |
| SM-34 | Rolls (plain with honey topping) |
| SM-35 | Rolls (pecan or cinnamon with honey glaze) |
| SM-36 | Honey Bars & Brownies(any flavor) |
| SM-37 | Cookies (any flavor: i.e. fruit drop, etc.) |
| SM-38 | Cakes (no cake mixes accepted) |
| SM-39 | Pies |
| SM-40 | Sauce (i.e. honey barbecue, etc.) 4 oz. min. |
| SM-41 | Dressing (honey mustard, etc.)
4 oz. min. |
| SM-42 | Candy |
| SM-43 | Snack Food (popcorn, peanuts, granola, trail mix, etc.) |
| SM-44 | Pickles |
| SM-45 | Jams |
| SM-46 | Jellies |
| SM-47 | Preserves |

The **NC Bee Buzz** is published quarterly by the North Carolina State Beekeepers Association, P. O. Box 33803, Raleigh, NC 27636-3803
Charles Heatherly, Editor heath7@bellsouth.net

2004 NCSBA Executive Committee

President- J. D. Foust (Region 3)

609 Lakestone Drive
Raleigh, NC 27609-6339 (919) 787-3578
Snow Camp (336) 376-6647
jdfo@bellsouth.net

1st Vice Pres- Norman D. Faircloth (Region 2)

302 Jamestown Road
High Point, NC 27260
(336) 454-2331 nfaircloth@northstate.net

2nd Vice President- Jack Tapp (Region 3)

1201 New Hope Church Road
Chapel Hill, NC 27516 (919) 942-2006
BusyBeeofNC@bellsouth.net>

Past Pres- Donald L. Moore (Region 3)

3634 Stoney Creek Church Road
Elon, NC 27244 (336) 584-3195
dlmoore1@bellsouth.net>

Treasurer- Paul Madren (Region 2)

329 Laurel Street
Mt. Airy, NC 27030 (336) 786-4848
Fancy Gap, VA (276) 728-7531
plmadren@mindspring.com

Corresponding Sec.-

Audrey Moore (Region 3)
3634 Stoney Creek Church Road
Elon, NC 27244 (336) 584-3195
dlmoore1@bellsouth.net>

Recording Sec.-

Joseph R. Smith, Jr. (Region 6)
36126 Gene Road New London, NC 28127
(704) 463-7039 smithjoe@vnet.net

Executive Sec.- Vacant

Director, 1 Year-

Janno Daniel (Region 6)
364 Cardinal Avenue Troy, NC 27371
(910) 572-1015 jdaniel@carolina.net

Director, 2 Years-

Mellie Swaney (Region 4)
332 Trinity Lane Kinston, NC 28504
(252) 523-9881 mlswaney@hotmail.com

Director, 3 Years- Ray L. Revis (Region 5)

339 Ridge Road, Marion, NC 28752
(828) 652-0013 revisinc@wnconline.net

Regional Rep.- Edd R. Buchanan (Region 1)

602 Blue Ridge Road, Black Mountain, NC 28711
(828) 669-8936 sourwoodcity1@aol.com

Regional Rep.- Jerry Isley (Region 2)

1276 Kennedy Farm Road,
Thomasville, NC 27360
(336) 472-6325 jbisley@aol.com

Regional Rep.- Kenneth G. Pipes (Region 3)

3047 Isley Drive, Snow Camp, NC 27349
(336) 229-5622 kpg3047@aol.com

Regional Rep.- John Brittle (Region 4)

3605 Elveden Road, New Bern, NC 28562
(252) 637-6489 <johnrbrittle@yahoo.com>

Regional Rep.- Greg Clements (Region 5)

10321 Thomas Payne Circle, Charlotte, NC 28277
(704) 846-3784 glements@worldpatents.com

Regional Rep.- Ellis W. Hardison (Region 6)

6521 N C Hwy. 705, Robbins, NC 28325
(910) 948-4121 <ewhardison@hotmail.com>

Special Projects- Fred Deer (Region 3)

916 Reedy Creek Road, Cary, NC 27513-3046
(919) 380-7005 <CDCBDeer@aol.com>

EAS Rep.- Donald Hopkins (Region 3)

381 Griffin Road, Snow Camp, NC 27349
H (336) 376-8250; W (919) 233-8214
don.hopkins@ncmail.net

Publicity Chair- Audrey Moore

NC Zoo Committee - Irvin Rackley

Awards/Contests Coordinator - Jack Tapp

Editor Bee Buzz- Charles Heatherly
heath7@bellsouth.net

NCSBA CALENDAR: Dr. John Ambrose

EDUCATION AND RESEARCH COORDINA-

TOR: Dr. David R. Tarpy,

Dept. of Entomology Campus Box 7613, NCSU, Ra-
leigh, N. C. 27695-7316 Ph (919) 515-1660 Fax
(919) 515-7746 Cell: (919) 218-4084

david_tarpy@ncsu.edu

ADVANCE REGISTRATION FORM
 2004 SUMMER MEETING
 CHARLOTTE, NORTH CAROLINA
 July 8, 9 & 10, 2004
 North Carolina State Beekeepers Association, Inc

NAMES(s) (last) _____, _____ (spouse) _____

(Children) _____

(Address) _____ (city) _____

State of Residence _____, Zip Code _____ Phone ()- _____

REGISTRATION FEE	<u>AMT. PAID</u>	<u>AMT. DUE</u>
Individual Registration (NCSBA member)-\$15.00	_____	_____
Family Registration (NCSBA member) \$20.00	_____	_____
NON-NCSBA member registration 30.00*	_____	_____
NON-NCSBA family registration \$35.00*	_____	_____
*(Includes annual membership dues)		
BANQUET		
Tickets - \$17.00 each		
Total Banquet Tickets and Number(s) _____ # @ \$17.00 ea _____		

DUES (if non-pay for YEAR 2004 or new NCSBA member)		
Annual NCSBA Membership - \$15.00	_____	_____
Annual Commercial Membership - \$30.00		
*(If you have not paid 2004 dues, included with registration)		
TOTAL	_____	_____

Complete and mail with your check to: Scott Jewell, P O Box 4156		
Glen Raven, NC 27215		
If you have questions , call Scott (336) 421-0034, or email scottandmonica@hotmail.com		
NOTE: Hotel Registration is your responsibility.		
*****----- for use by the Registration personnel -----		
Amount Paid: _____ How Paid: Cash ____ or Check _____		
(check # and date)		
Collected by: _____, Date _____		

Agenda

Summer 2004 NCSBA Meeting
Holiday Inn Woodlawn, 212 Woodlawn Rd., Charlotte, NC
704-524-8350 1-800 VIP-STAY

Thursday, July 8

- 1 pm Welcome, J. D. Foust, NCSBA President,
Richard Flannagan, President Mecklenburg County Beekeeper Assoc.
- 1:30 pm Current Research at the Tucson Bee Lab, Dr. Dianna Sammataro, Research
Entomologist USDA, Carl Hayden Honey Bee Research Facility
- 2:30 pm Pesticide Safety (V) Ben Dungan Gaston County Extension Agent
- 6:30 pm Happy Hour, Mecklenburg County Beekeepers Association
- 7 pm Writing About Bees, Dr. Mark Winston, Professor of Biological Sciences,
Simon Fraser University, British Columbia, Canada

Friday, July 9

- 8 am Welcome, J. D. Foust, NCSBA President
- 8:15 am NCSU Update, Dr. David Tarpy, State Apiculturist
- 8:55 am NCDA Update, Adolphus Leonard, NCDA Bee Inspector
- 9:35 am NCSBA Business Meeting
- 10:10 am Break
- 10:40 am The Essence of Royalty: Honey Bee Queen Pheromones,
Dr. Mark L. Winston
- 11:20am The History and Management of Russian Queens, Charlie Harper,
Carencro, LA, Russian Honey Bee Project Contractor
- 12 noon Lunch
- 1:30 pm Honey Bee Anatomy, Dr. David Tarpy and Will Hicks
- 2:30 pm Honey Bee Anatomy (continued)
- 6:30 pm Banquet

Saturday, July 10

- 9 am Welcome, J.D. Foust, NCSBA President
- 9:15 am Comparing New and Old Comb, Jennifer Berry, Apicultural Research
Coordinator and Apiary Manager, University of Georgia
- 9:55 am Bee Sweat: Is It Important, Dr. Diana Sammataro
- 10:35 am Break
- 11:10am What Is Next: Problems As Seen Through The Eyes of a Research Inspector,
David Westervelt, Florida State Department of Agriculture and Consumer
Services Honey Bee Inspector
- 12 noon Beekeeping in Bolivia, Don Hopkins, Chief Bee Inspector, NCDA&CS
- 12:45 pm Adjourn, J. D. Foust

Telling The Bees

