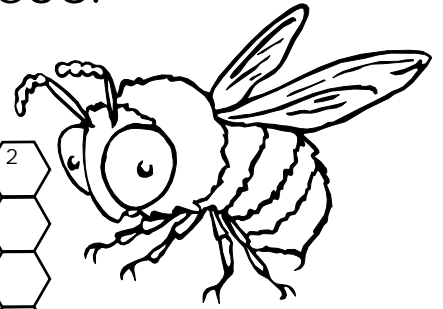
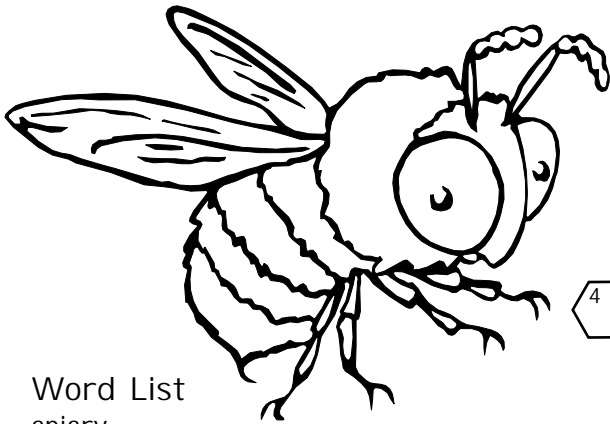
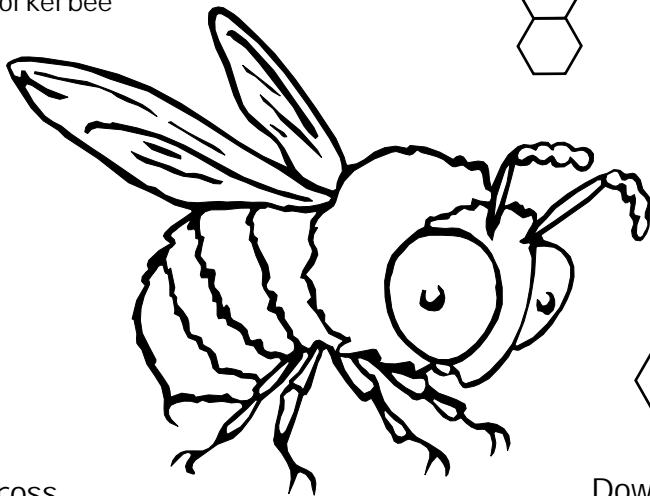
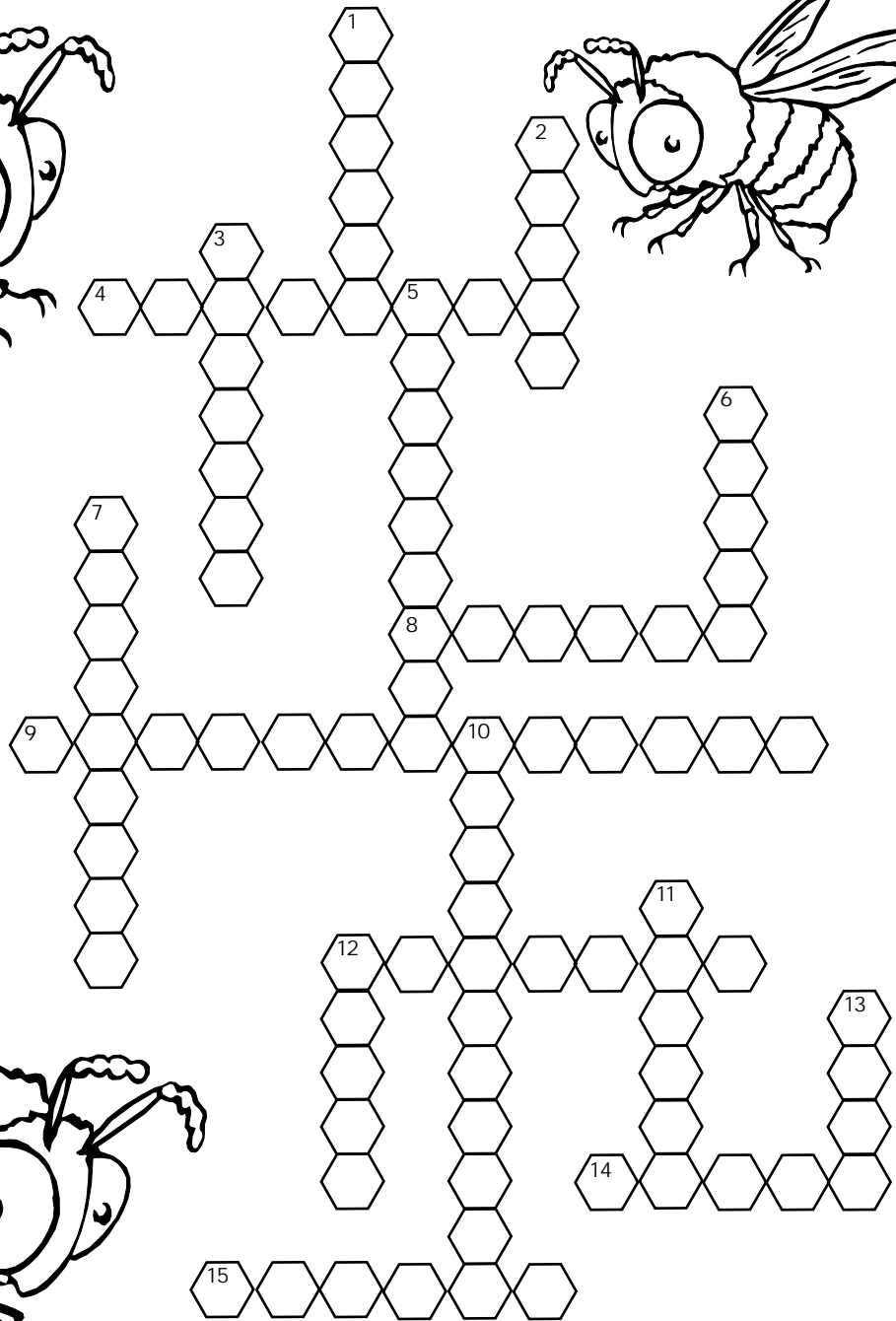


NC State Beekeepers Assoc.



Word List

apiary
 beekeeper
 colony
 drone
 hive
 honey
 honeybee
 insects
 metamorphosis
 nectar
 pollen
 pollination
 queen
 stinger
 swarm
 workerbee



Across

4. An insect with 6 legs, 4 wings and a honey stomach.
8. A powdery dust from flowers collected by honeybees.
9. Changes of an insect from egg, larva, pupa, adult.
12. An organ in the abdomen of a worker bee for defense.
14. A male bee
15. A social community with thousands of bees and one queen.

Down

1. Group of bee colonies kept in one location (bee yard)
2. A sweet fluid made by bees from plant nectar.
3. An animal with a head, a thorax, an abdomen and 6 legs.
5. A person who keeps honeybees.
6. A mated female bee that lays all the eggs in the colony.
7. A female bee that does all the work in the colony.
10. The carrying of pollen from one flower to another for seed.
11. A sweet liquid produced by flowers collected by honeybees.
12. Nature's way of creating a new colony of bees.
13. A man-made wooden or plastic home for honeybees.